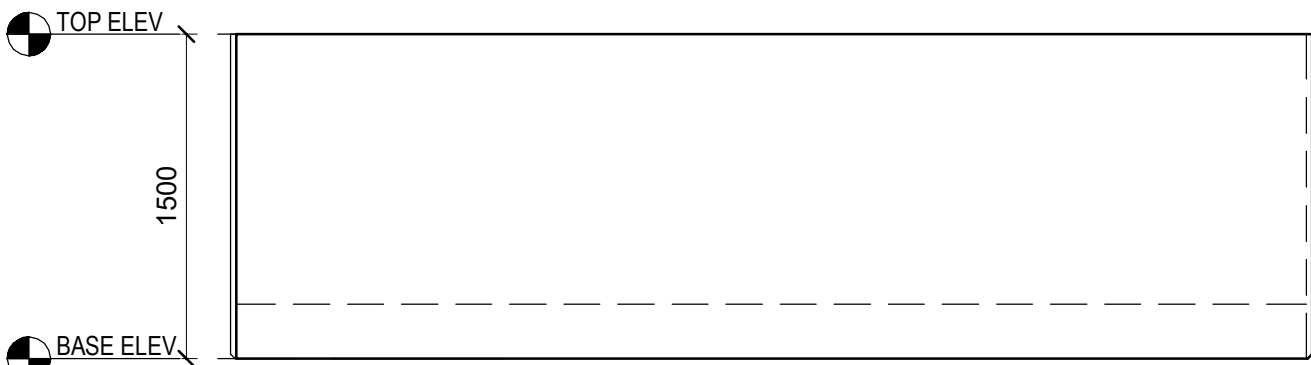
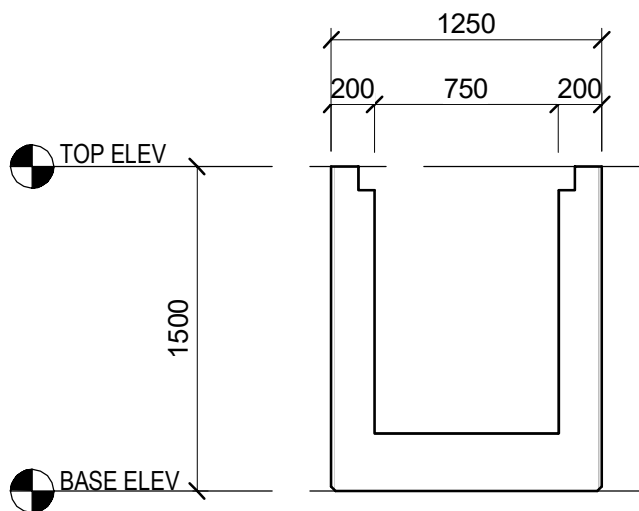


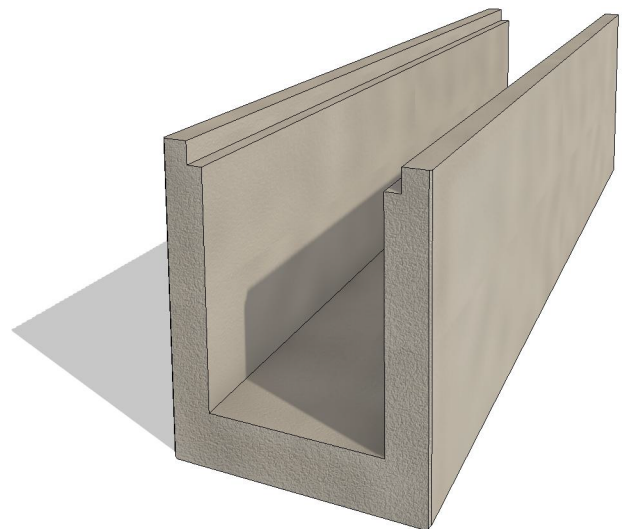
PLAN VIEW



SIDE VIEW



FRONT ELEVATION



ELEVATION

westcon
precast inc.

750 TRENCH

CONCRETE	RELEASE 15 MPa	28 day 30 MPa	AIR 5-8%	SLUMP 70mm	TYPE 50	DRW. NO. W11-30
VOLUME	SELF WEIGHT					
3.65m ³	9,137.6 kg	20,102 lbs				
DATE: APRIL 2022	CODE: 0100	BY: AB	Rev. A			